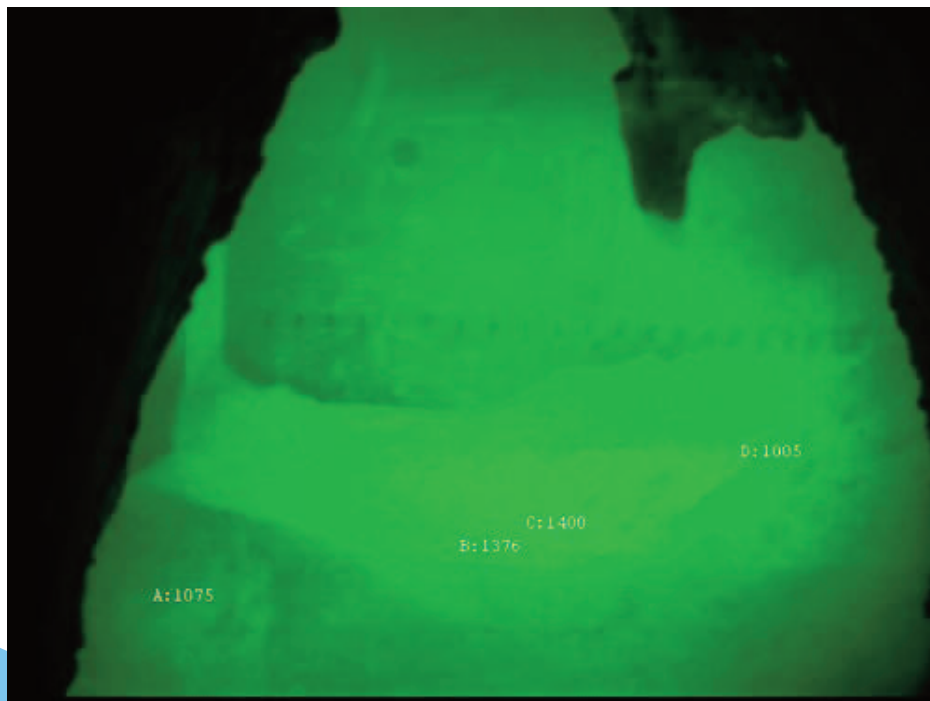


# RB VIDEO MONITORING

*The Perfect Video Monitoring Solution for Recovery Boiler*

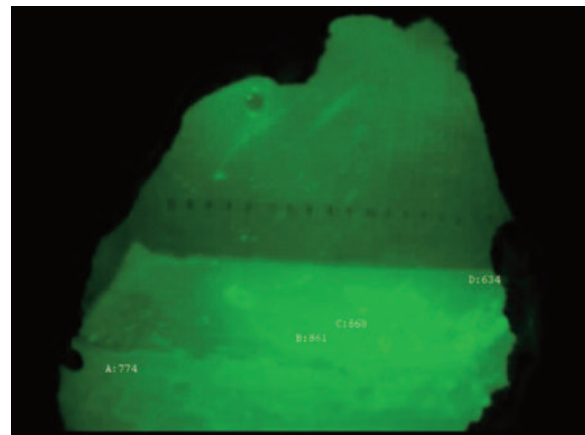
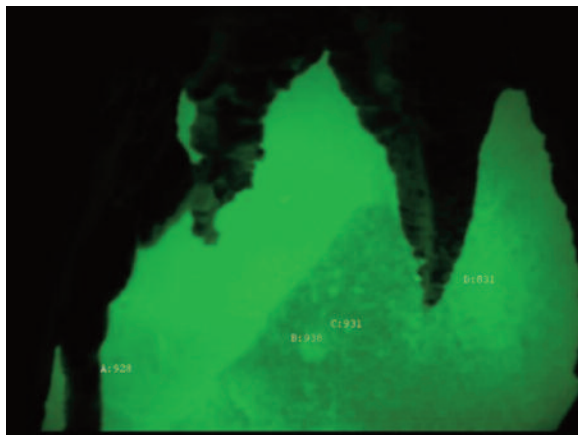
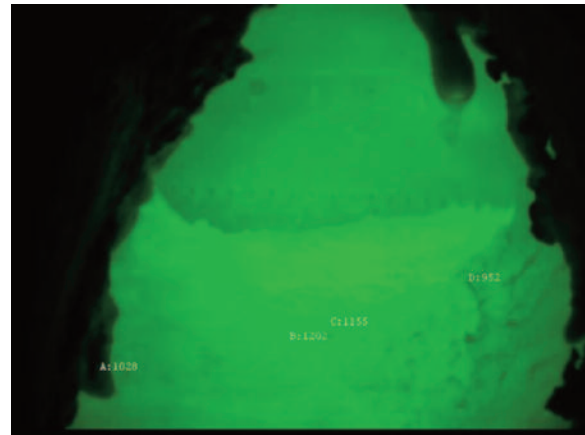
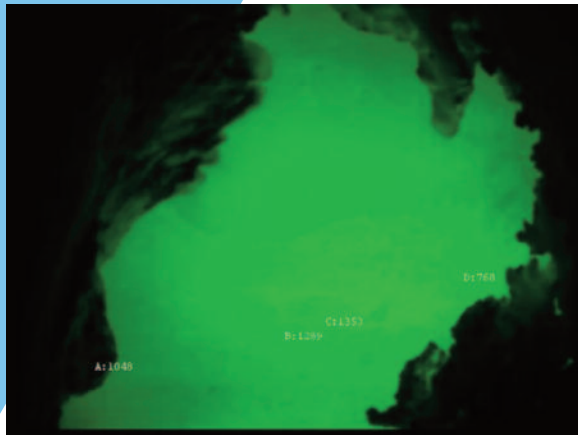
**THE RBVIDEO BOILER VIDEO MONITORING** is a perfect solution for the harsh environment of the recovery boiler.

**THE RBVIDEO BOILER VIDEO CAMERA CONTROL SOFTWARE** is a visual process analysis tool that allows the Recovery Boiler operator to analyze the shape and temperature of the bed. The operator can add color into the gray image to enhance visual perception. Eight temperature regions can be defined on the video image and average region temperatures can be connected to OPC or PI data server. The operator can utilize the delta image tool to monitor changes in the shape of the bed, for example the shape after a process change. Slow motion image video can also be played to view shape changes over longer periods of time. The operator can add a filter function onto the live image to clarify visual perception the image from dust and flying liquor inside of the boiler. A freely adjustable multi-shape line for marking the shape of the bed can also be used as an image reference. The system's pseudo coloring tools add better visual appearance to the bed shape. A total of four cameras can be added to single monitoring unit. Additional hardware options are available on request.



## IMAGE SAMPLES

Taken from inside the Recovery Boiler using RB Video Monitoring



### FEATURES:

- Spot temperature of the boiler measured by pyrometer inside of the video camera
- Up to eight region temperatures in any size or overlapped
- Two hour trend of pyrometer temperature
- Live temperature histogram from camera updated 30 times per second
- Display selection either live mode or processed image mode
- Live image filter to clarify the shape of bed up to ten image average
- Slow motion image player with up to hundred images with adjustable time lag
- Freely adjustable multi shape line for marking the shape of the bed
- Pseudo coloring of the image for better visual contrast

